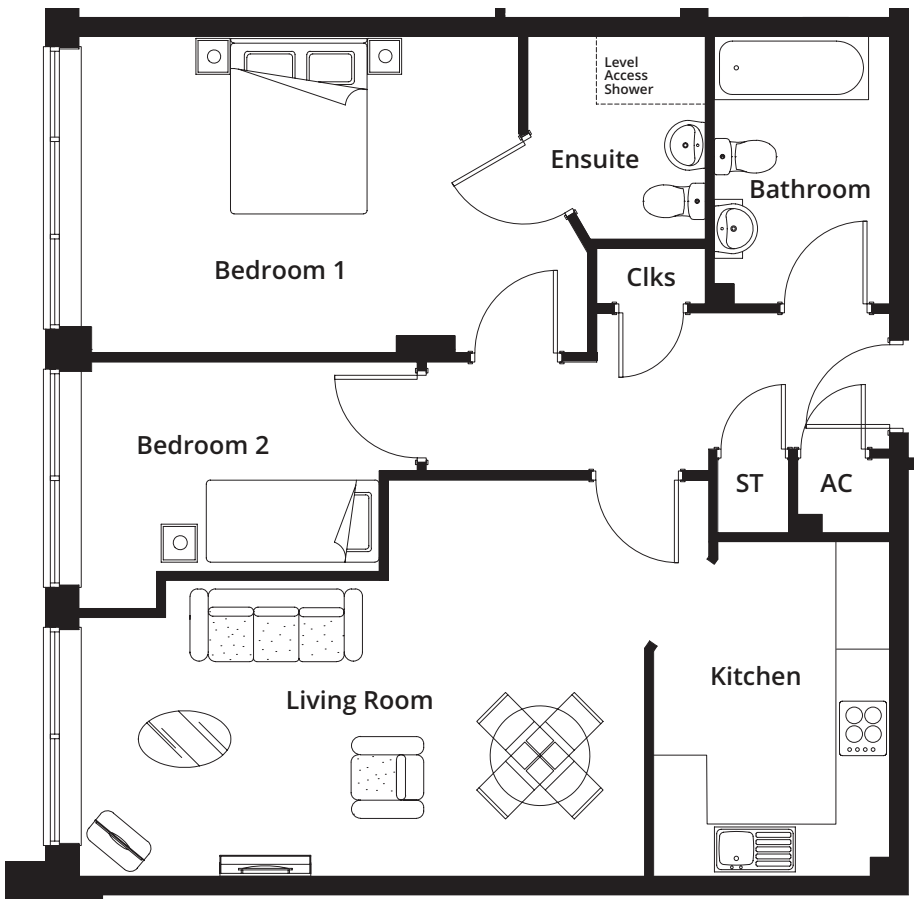
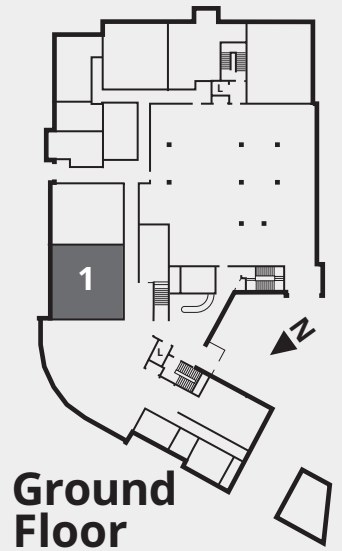


honeybourne gate **hg**

Two bedroom  
apartment:

1



Total internal  
floor area:

**79.8m<sup>2</sup>**

**Living Room**

5.60 x 3.95m (18'4" x 12'11")

**Kitchen**

3.30 x 2.35m (10'10" x 7'8")

**Bedroom 1**

4.98 x 3.15m (16'4" x 10'4")

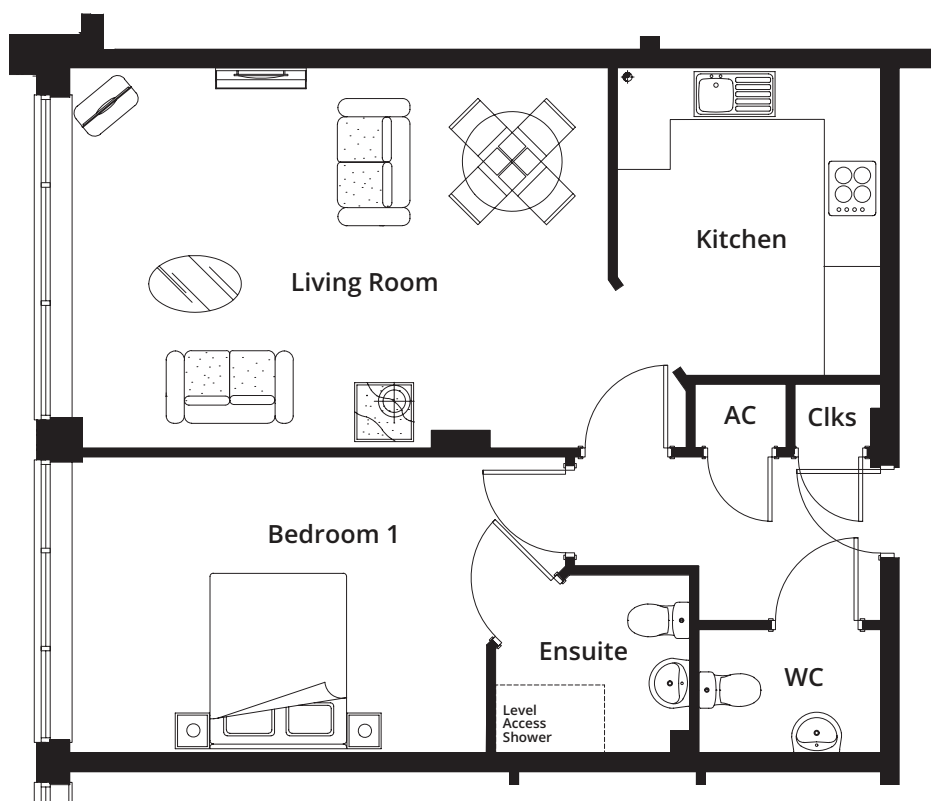
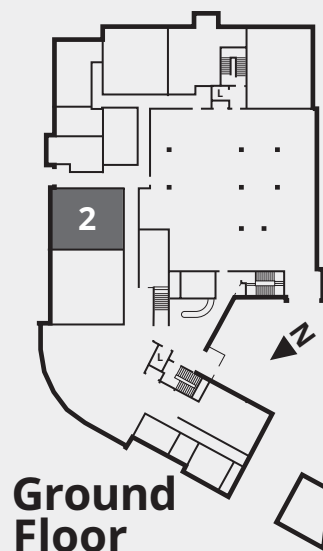
**Bedroom 2**

2.90 x 2.11m (9'6" x 6'11")

honeybourne gate **hg**

One bedroom  
apartment:

**2**



Total internal floor area: **66.1m<sup>2</sup>**

**Living Room**

5.30 x 3.80m (17'5" x 12'6")

**Kitchen**

3.10 x 2.60m (10'2" x 8'6")

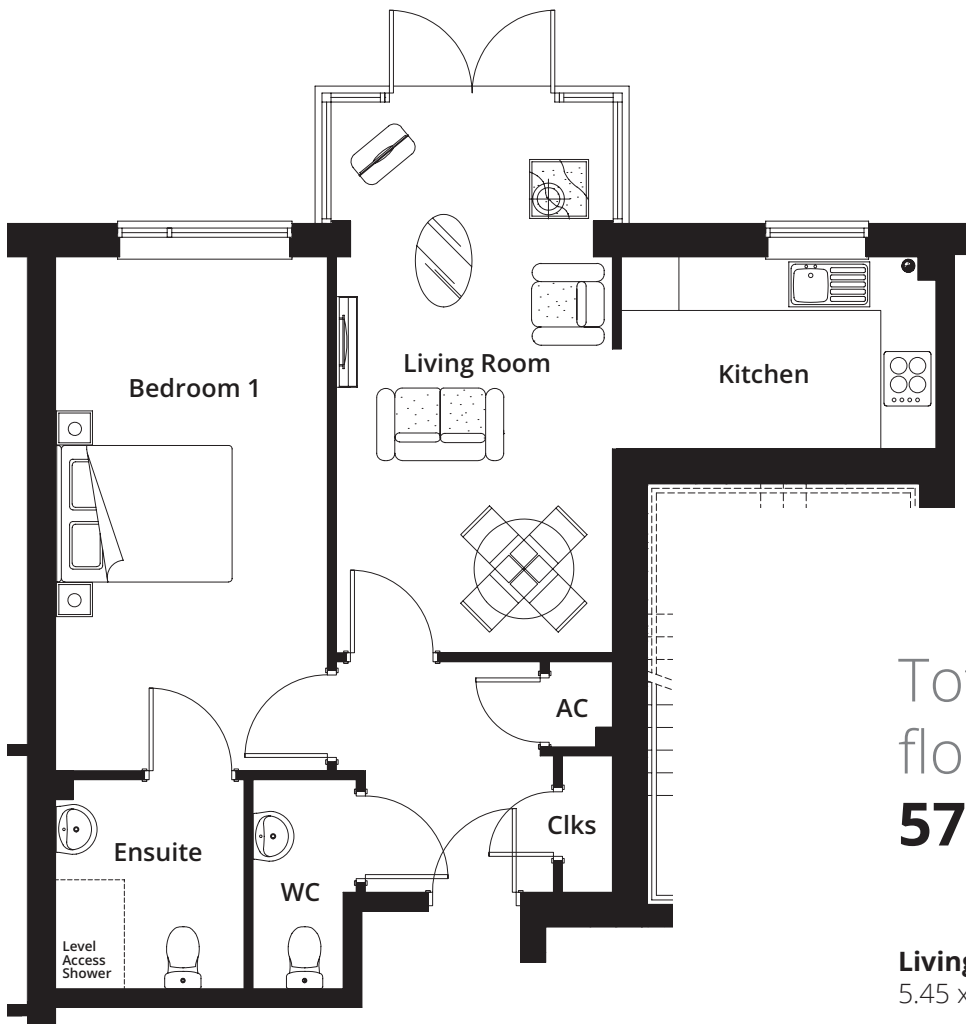
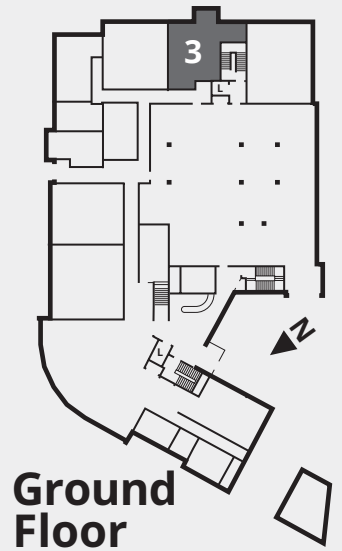
**Bedroom 1**

4.10 x 2.95m (13'5" x 9'8")

honeybourne  
gate **h g**

One bedroom  
apartment:

**3**



Total internal  
floor area:

**57.4m<sup>2</sup>**

**Living Room**

5.45 x 2.75m (17'11" 9")

**Kitchen**

3.15 x 1.90m (10'4" x 6'3")

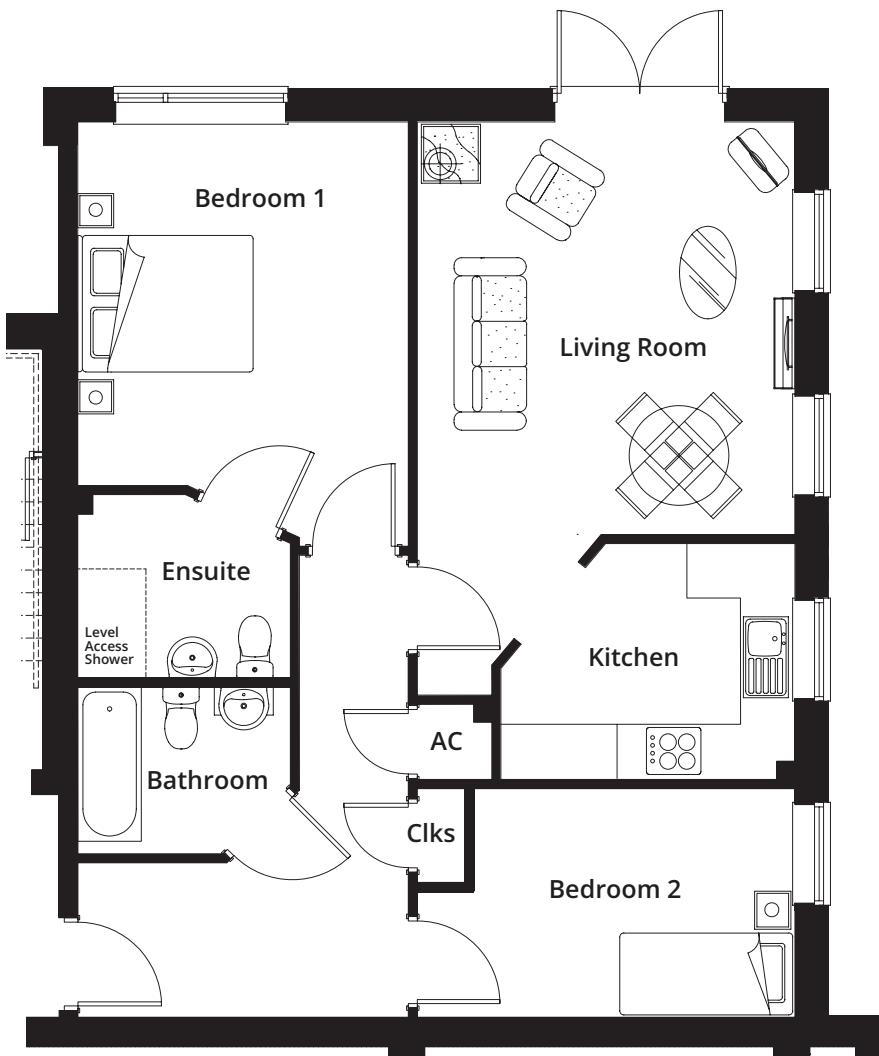
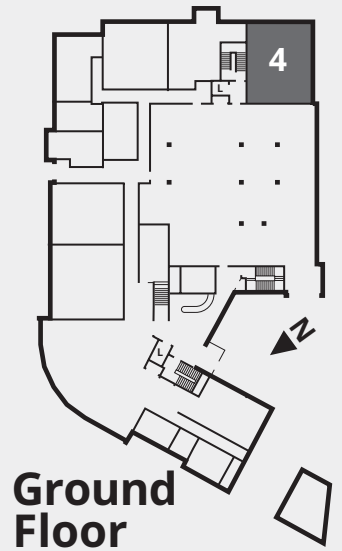
**Bedroom 1**

5.10 x 2.70m (16'9" x 8'10")

honeybourne gate **hg**

Two bedroom  
apartment:

4



Total internal  
floor area:

**78.9m<sup>2</sup>**

**Living Room**

4.10 x 3.70m (13'5" x 12'2")

**Kitchen**

2.90 x 2.35m (9'6" x 7'8")

**Bedroom 1**

3.60 x 3.30m (11'10" x 10'10")

**Bedroom 2**

3.70 x 2.25m (12'2" x 7'5")